

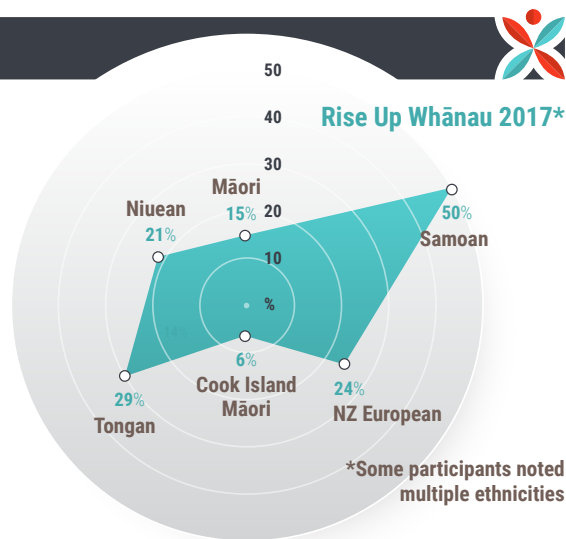
Ngā Tau Tuangahuru

INVESTING IN SUCCESS AS MĀORI AND AS PĀSIFIKA

PACIFIC FAMILIES AND SUCCESS – RISE UP ACADEMY

Key findings from Rise Up families interviewed as part Ngā Tau Tuangahuru are shared below. Nga Tau Tuanguahuru¹ is a study funded by **Foundation North**, into what ‘success’ looks like for Māori and Pacific families. Whānau and students from five educational providers are being interviewed face to face and in-depth multiple times, over a ten-year period.

In 2017, 69 Māori and Pacific families, involving 126 family members, were interviewed. Nineteen of these families had children attending Rise Up Academy (RUA) in South Auckland. A total of 34 people took part in these Rise Up interviews, and all but one of the same families were interviewed again in 2019.



What does family success look like?

Rise Up families describe success in holistic terms. ‘Success’ includes financial stability, living by family values, strong family relationships, collective wellbeing, good education, faith, and physical and emotional wellbeing. When asked to choose their top three aspects of family success, families chose faith/spirituality (56%), having good family relationships (44%), living by values (33%) and being healthy (33%).

What supports family success?

Key factors noted were having support networks, strong family relationships, planning for the future, faith and prayer. The top three things that support family success were living by family values (67%), love (44%) and education/school (39%).

Main barriers to family success

Families spoke about lack of time, financial constraints, lack of resources and poor health as being the most significant barriers to their success.

Rise Up Academy

When asked why they chose Rise Up Academy for their children, families spoke of a values alignment between school and home (culture and faith), the holistic and family approach of the school, and the positive impact of Rise Up’s Whānau Programmes.

1 Ngā Tau Tuangahuru means ‘looking beyond for ten more years’. See <https://www.foundationnorth.org.nz/mpei> for more on the study.

2 He Puna Marama Trust (Whangarei), Manaiaakalani (Tamaki), Oceania Careers Academy (Mangere), Rise Up Trust (previously Otahuhu, now Mangere), Sylvia Park School (Mt Wellington).



INVESTING IN SUCCESS AS MĀORI AND AS PĀSIFIKA

How does Rise Up Academy support family success?



Many families discussed how the Whānau Programmes gave them tools they could use to support their children and their family success. Strong whānau engagement and staff support, including good staff communication and pastoral support, also support family success.

What does educational success look like?



Key aspects of educational success families identified were achieving academic standards and goals (56%), their children learning and having good attitudes and character (44%), children enjoying learning (33%) and students following their own path and dreams (33%).

What gets in the way of educational success?



Families noted students being distracted by social media/gaming (44%), poor time management/organisation (39%), poor attitudes/work habits (33%), being distracted by friends/others (33%), and lack of time (33%), as key barriers to educational success.

Summary



Feedback from Rise Up families affirm core enablers of Pacific educational success³ to be:

- A** Pacific-led approaches
- B** positive reinforcement of cultural identity, language, practices, values and models
- C** strong family relationships and resilient aiga/families
- D** a safe school environment, with families supported to engage effectively in children's learning.

Rise Up is an exemplar of these enablers. It goes further by providing wraparound family support via its whānau engagement, whānau programmes and pastoral care, all of which facilitate Pasifika educational and family success⁴.

Ngā Tau Tuangahuru upholds the vision of Foundation North's **Māori and Pacific Education Initiative**⁵ (MPEI), *Mā tātou anō tatou e korero – We speak for ourselves*. Families know best what supports and hinders their self-defined success, and community leaders in the educational space are well placed to know what works to support their community.

3 Kinnect Group & Foundation North (2016). *What have we learned about Māori and Pacific educational success?* Foundation North's Māori and Pacific Education Initiative. See link at footnote 5 below to access.

4 See also Trotman 2015, *Whānau Experience of Rise Up Academy*, <https://weavingchange.nz/project/rise-up-trust/>.

5 See <https://www.foundationnorth.org.nz/news-and-reports/article/maori-and-pacific-education-initiative>.